

Grey County 2018 Strategic Initiatives

BWDSB / BGCDSB Annual Community Planning
and Partnership Meeting

Scott Taylor, Senior Planner
Barbara Arbuckle, Manager of Children's Services
May 8, 2018

Corporate Strategic Plan

Goal 1 - Grow the Grey County Economy

Enhance and diversify economic opportunities by becoming investment ready and promoting Grey County's exceptional natural assets.

Goal 2 - Support Healthy, Connected Communities

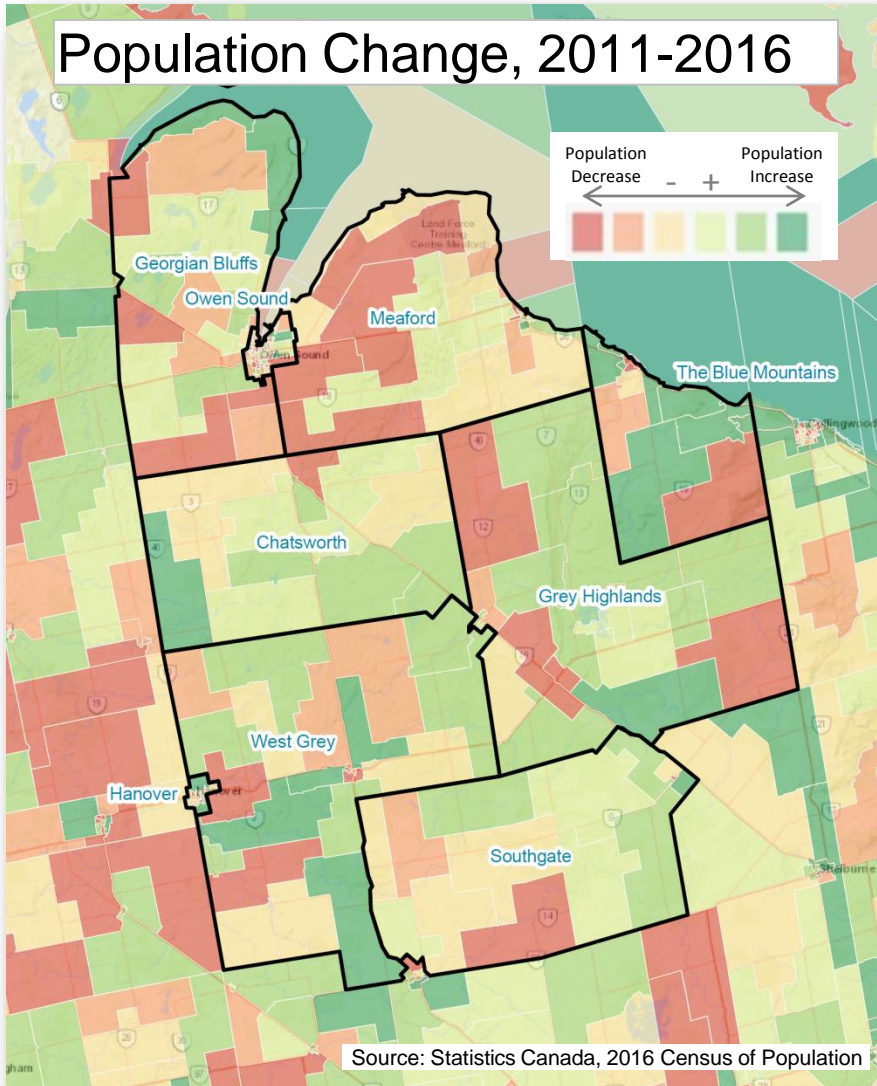
Improve the physical, operational and virtual connections between Grey County's communities and areas beyond to strengthen communities and improve the quality of life for residents

Goal 3 - Deliver Excellence in Governance and Service

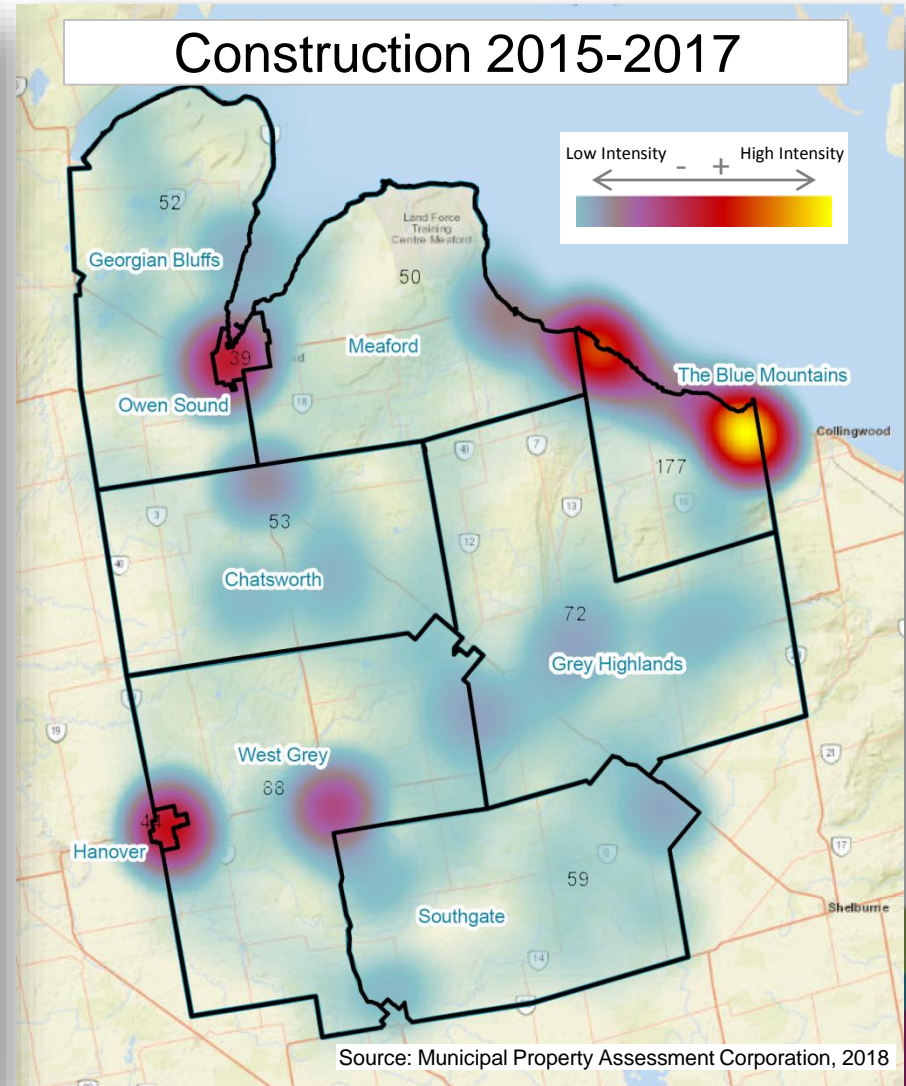
Serve the needs of a large County spanning 9 unique municipalities by fostering a culture of inclusive decision making and excellence in public service.

Planning & Development Trends

Population Change, 2011-2016



Construction 2015-2017



Planning Initiatives

- 'Recolour Grey' County Official Plan
- Development Applications (Dundalk, Markdale, Durham)
- Growth Data Partnership Project
- Community Improvement Plan Project



Economic Development Trends

ECONOMIC BARRIERS:



LABOUR



HOUSING



TRANSPORTATION



CHILDCARE

TOP EMPLOYMENT SECTORS: (EXPORTS)



HEALTH CARE
(\$318M)



MANUFACTURING
(\$1.5B)



CONSTRUCTION
(\$200M)



RETAIL
(\$90M)



ACCOMMODATION
& FOOD SERVICE
(\$157M)



AGRICULTURE
(\$308M)

DID YOU KNOW?

- Grey County leads the province in the production of apples, sheep and hay.
- Over 2070 building permits were completed/issued by October 31, with 80% residential and 11% industrial. Total assessment is \$18.5 billion, which grew 12% from 2012 to 2016.
- Over 200 acres of serviced industrial land and over 500,000 sq. ft. of industrial/warehousing space is available for lease or purchase.
- Grey County has a strong specialization in agriculture, manufacturing, tourism and health care.



Economic Development Initiatives



INVESTMENT READY

- Investment Ready Protocol
- Nuclear Economic Development & Innovation Initiative
- Online Community Profiles
- New Official Plan - work with Planning to apply EcDev Lens

BUSINESS FRIENDLY ENVIRONMENT

- Business Visitation Program
- Events & Workshops (2 Breakfast Mixers, 2 Creative Mixers, Planning 101, Buying & Selling Business, Doing Business w/ Government)

AGRICULTURE, FARMS & LOCAL FOOD

- Local Agri-Food Strategy
- Updated Statistics
- Agri-Food Asset Map
- Ag 4.0.1

WORKFORCE DEVELOPMENT

- Regional Job Fair
- EmployerOne Survey
- Regional Skills Training, Trades & Innovation Centre

MARKETING GREY'S GREATNESS

- Made in Grey Magazine
- Consumer & Real Estate/ Developer Tradeshows

KEY INFRASTRUCTURE

- SWIFT
- Great Network
- Economic Barriers (Transportation, Housing, Childcare, Training)

TOURISM

Grey County Tourism Department

Children's Services – Delegation of Authority

Ministry of Education

CMSM Delegation under the CCEYA (2014)

Grey County

Delegated Consolidated Municipal Service Manager (CMSM)

- Responsible for program oversight in keeping with the CCEYA (2014) and local service plan

Core Service Delivery

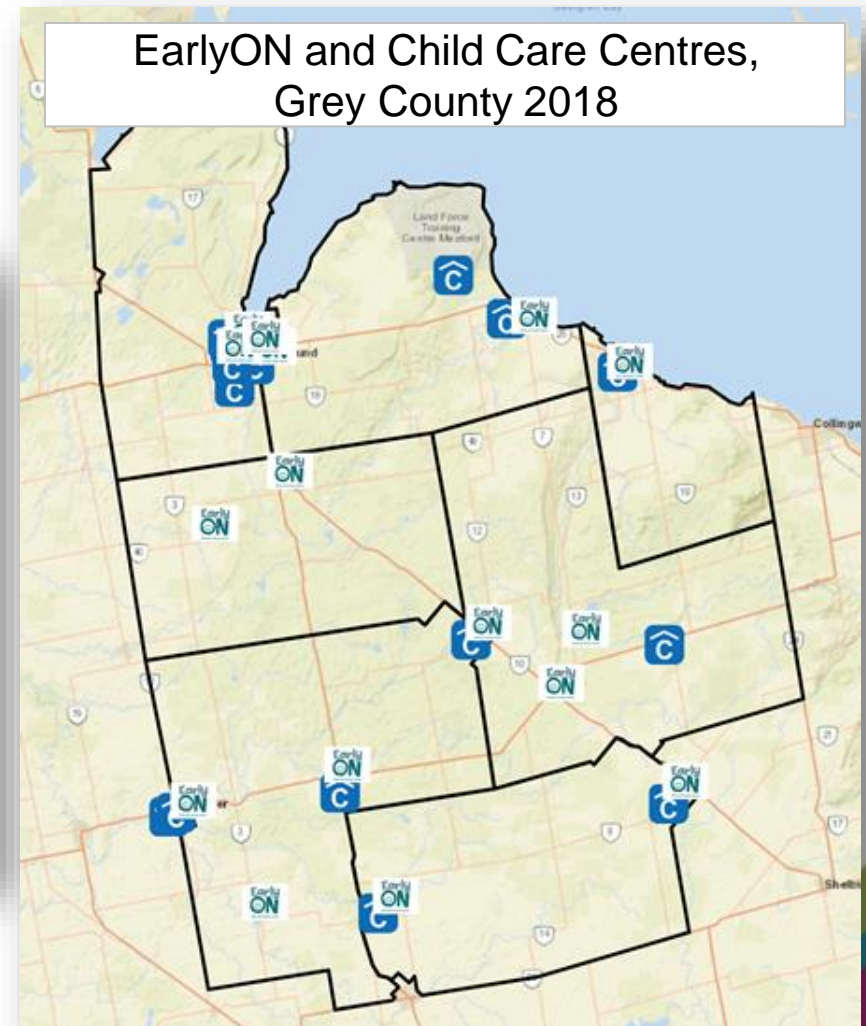
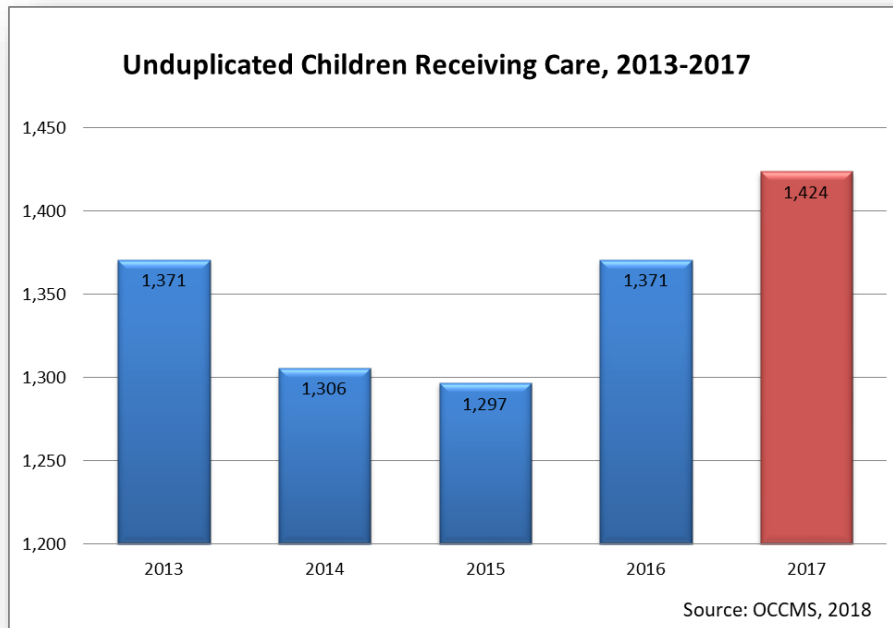
Fee Subsidy Program	Centre Based Supports
Home Child Care Program	EarlyON Centres

Social Initiatives (County Funded)

Keystone Children's Mental Health (Children's Reinvestment)	Beaver Valley Outreach (BVO) YMCA (NCB Program)
---	--

Children's Services Trends

- 43 Centre Based Child Care Programs
- 40 Home Child Care Providers
- 19 EarlyON Programs
- 336 Home Child Care Children



Children's Services Initiatives

- Improving Access and Affordability to quality local licensed Childcare
- Collaborative creation of local child care and EarlyON service plans
- Journey Together: Reconciliation with Indigenous Peoples
- Ministry of Education Capital Projects
- Special Needs Resourcing
- Early Literacy Supports
- Child Care Core Services Delivery
- EarlyON Core Service Delivery
- Special Purpose Fund (Repairs & Maintenance, Play Based Material, Small Water Works, Capacity Building, Transformation Expense)
- Data and research informed program development and training supports (i.e.: Early Development Instrument-EDI; Bruce Grey Data Information Sharing Collaborative – BGDISC)

Thank You

Scott.Taylor@grey.ca

Barbara.Ar buckle@grey.ca

